

## Brushless Motors Water-Resistant Dust-Resistant Connector Type 200 W

### BLE2 Series/BMU Series

Water-resistant, dust-resistant brushless motors that withstand wet and dusty environments, and can be washed down with water.



**BLE2 Series**  
List price: from 342 €

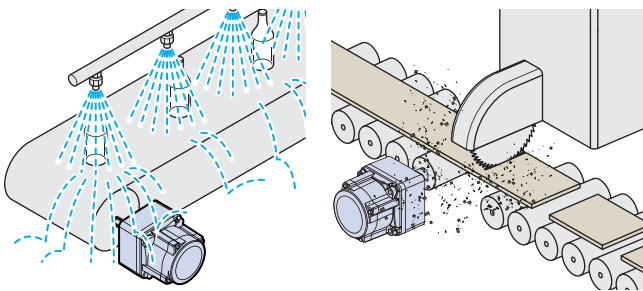
**BMU Series**  
List price: from 274 €

### Features

Water-Resistant, Dust-Resistant

Degree of Protection **IP67**

Can be used in dusty and wet environments.  
Can be washed down with water. Designed to be mounted on equipment with no protective cover.



Can be washed down with water while mounted on equipment

OK even for dusty applications

**IP67**

Usable after immersion in water under specified conditions  
Completely dust-proof structure

(Water-resistant Test Conditions)

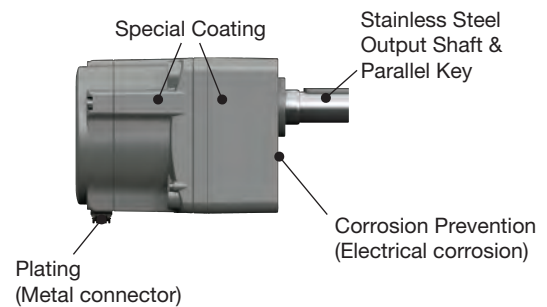
1 m below the surface of the water for 30 minutes

\*However, please do not use immersed in water or in high water pressure conditions.

Rust-Resistant

Improved Anti-Corrosion Properties

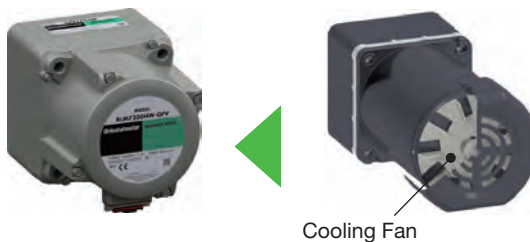
The motor is covered with a special rust-resistant coating, with an output shaft and screws made of stainless steel. The installation surface is also painted, so it will be rust-resistant even when installed on stainless steel equipment.



Suitable for Clean Environments

Increased Environmental Resistance

The high efficiency motor does not require a cooling fan.



Cooling Fan

Easy Equipment Design

3 Cable Outlet Directions

3 cable outlet directions can be selected, reducing positional restrictions in equipment design. Facilitating direct connection between motor and driver without relays.

Locking, IP67 Connector



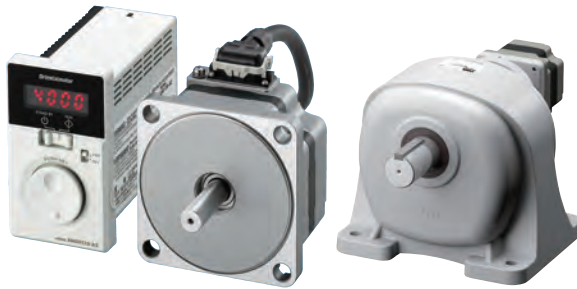
Cable outlet in output shaft direction

Cable outlet in opposite to output shaft direction

Cable outlet in vertical direction

## Features

### BMU Series

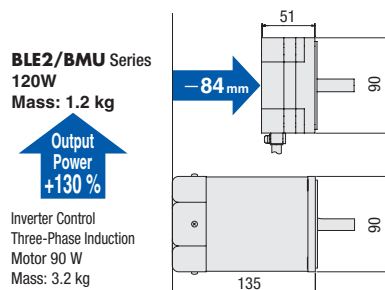


A settings dial designed for easy speed control. Once the motor and the driver are connected, all parameters can be easily set using the dial. Introducing the **BMU Series**, designed with ease of use in mind.

- Spin and push. Easy speed control.
- Easy wiring. Quick start.
- Opening the panel cover reveals extensive functions.

#### Compact Design

A reduction of 2.0 kg (62.5 %) compared to a 3 phase AC motors, with a 84.6 mm (62.5 %) reduction in length, while also increasing output power by 130 %. The lightweight, slim, high-power motor contributes to downsizing equipment.



### BLE2 Series

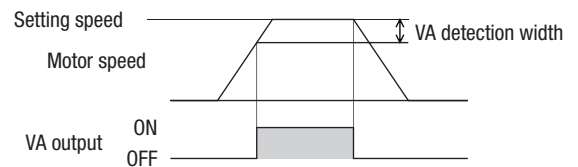


**BLE2 Series** models have been fully updated. The motor, driver, and cable have been redesigned, while retaining the original advantages of the brushless DC motors.

- The driver can be digitally set and operated via the front panel of the driver.
- Compact and slim drivers allows for Side-by-Side Installation.
- Speed Setting Via PC (USB) or External Signals (I/O).

#### Speed Monitoring

Adjust the speed detection range according to the application and detect speed deviations. An output signal is set when motor speed is under the lower limit of speed detection range. External monitoring is not required.



# Orientalmotor

These products are manufactured at plants certified with the international standards **ISO 9001** (for quality assurance) and **ISO 14001** (for systems of environmental management).

Specifications are subject to change without notice. This catalogue was published in June 2022.

#### ORIENTAL MOTOR (EUROPA) GmbH

www.orientalmotor.de  
Tel: 0211-520 670 0  
Fax: 0211-520 670 99



#### ORIENTAL MOTOR (UK) LTD.

www.oriental-motor.co.uk  
Tel: 01256-347 090  
Fax: 01256-347 099



#### ORIENTAL MOTOR ITALIA s.r.l.

www.orientalmotor.it  
Tel: 02-939 063 46  
Fax: 02-939 063 48



#### Spanish Office

www.orientalmotor.es  
Tel: +34 918 266 565

#### ORIENTAL MOTOR SWITZERLAND AG

www.orientalmotor.ch  
Tel: 056-560 504 5  
Fax: 056-560 504 7



#### ORIENTAL MOTOR (FRANCE) SARL

www.orientalmotor.fr  
Tel: 01-478 697 50  
Fax: 01-478 245 16



Other countries: www.orientalmotor.eu

#### Customer Service Center (Support in German & English)

00800-22 55 66 22\*  
CA LL OM CC

Mon-Thu: 08:00 - 16:30 CET Friday: 08:00 - 15:00 CET  
\* Free Call Europe

info@orientalmotor.de