

OPERATING MANUAL

FPW Series Dust Resistant, Water Tight Motors (Induction Motors)



Thank you for purchasing an Oriental Motor product. This Operating Manual describes product handling procedures and safety precautions.

- Please read it thoroughly to ensure safe operation.
- Always keep the manual where it is readily available.



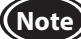
Introduction

■ Before using the motor

Only qualified personnel should work with the product. Use the product correctly after thoroughly reading the section "Safety precautions." In addition, be sure to observe the contents described in warning, caution, and note in this manual. The product described in this manual has been designed and manufactured to be incorporated in general industrial equipment. Do not use for any other purpose. Oriental Motor Co., Ltd. is not responsible for any damage caused through failure to observe this warning.

Safety precautions

The precautions described below are intended to prevent danger or injury to the user and other personnel through safe, correct use of the product. Use the product only after carefully reading and fully understanding these instructions.

 WARNING	Handling the product without observing the instructions that accompany a "WARNING" symbol may result in serious injury or death.
 CAUTION	Handling the product without observing the instructions that accompany a "CAUTION" symbol may result in injury or property damage.
 Note	The items under this heading contain important handling instructions that the user should observe to ensure safe use of the product.

WARNING

- Do not use the product in explosive or corrosive environments, in the presence of flammable gases, in water, or near combustibles. Doing so may result in fire, electric shock or injury.
- Assign qualified personnel the task of installing, wiring, operating/controlling, inspecting and troubleshooting the product. Failure to do so may result in fire, electric shock or injury.
- Do not transport, install the product, perform connections or inspections when the power is on. Always turn the power off before carrying out these operations. Failure to do so may result in electric shock.
- Turn off the power in the event the overheat protection device (thermal protector) is triggered. Failure to do so may result in injury or damage to equipment, since the motor will start abruptly when the overheat protection device (thermal protector) is automatically reset.
- The motor is Class I equipment. When installing the motor, ground the motor using a protective grounding wire. Failure to do so may result in electric shock.
- If the product is used in a place where it may come in contact with water during operation, provide an earth leakage breaker. Failure to do so may result in electric shock.
- Keep the input-power voltage within the specification to avoid fire and electric shock.
- Connect the cables securely according to the wiring diagram in order to prevent fire and electric shock.
- Do not forcibly bend, pull or pinch the cables. Doing so may result in fire and electric shock.
- Be sure to insulate the connection terminal of the capacitor. Failure to do so may result in electric shock.

- Turn off the power in the event of a power failure, or the motor will suddenly start when the power is restored and may cause injury or damage to equipment.
- Do not touch the connection terminal of the capacitor immediately after the power is turned off (for a period of 30 seconds). The residual voltage may cause electric shock.
- Do not disassemble or modify the motor. This may cause electric shock or injury.

CAUTION

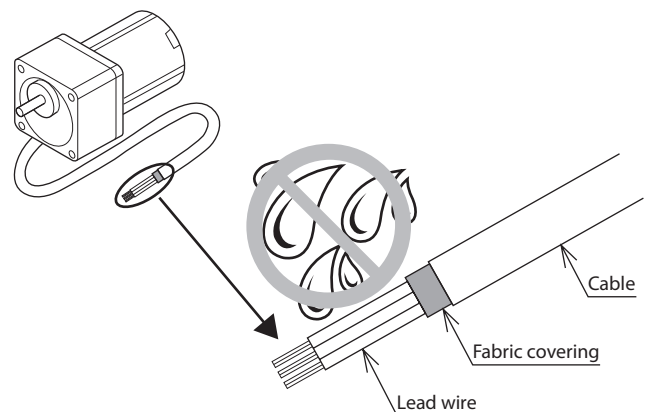
- Do not use the motor beyond its specifications, or electric shock, injury or damage to equipment may result.
- Do not touch the motor during operation or immediately after stopping. The surface is hot and may cause a burn.
- Do not hold the motor output shaft or motor cable. This may cause injury.
- Keep the area around the motor free of combustible materials in order to prevent fire or a burn.
- To prevent the risk of damage to equipment, leave nothing around the motor that would obstruct ventilation.
- To prevent bodily injury, do not touch the rotating parts (output shaft) of the motor during operation.
- When an abnormality is noted, turn off the power immediately, or fire, electric shock or injury may occur.
- The motor's surface temperature may exceed 70 °C, even under normal operating conditions. If a motor is accessible during operation, post the warning label shown in the figure in a conspicuous position to prevent the risk of burns.
- Dispose the product correctly in accordance with laws and regulations, or instructions of local governments.



Warning label

Precautions for use

Do not allow water or water droplets to splash on the end of the cable. Otherwise, water may intrate inside the motor through the lead wires or fabric covering, resulting in damage to the motor.



Preparation

■ Checking the product

Upon opening the package, verify that the items listed below are included. Report any missing or damaged items to the branch or sales office from which you purchased the product.

- Motor* 1 unit
- Capacitor 1 piece
(only for single-phase motors)
- Capacitor cap..... 1 piece
(only for single-phase motors)
- Instructions and Precautions for Safe Use..... 1 copy
- Set of mounting bolts..... 1 set
(Mounting screws, Nuts, Washers 4 pieces each, Key 1 piece)

* The motor and gearhead are integrated.

■ Checking the model name

Check the model number against the number indicated on the product. The gear ratio appears at the model number indicated by the box (□).

● 100 V/110 V/115 V type

Model	Motor model	Capacitor model
FPW425A2-□J	FPW425A2-□	CH80CFAUL2
FPW425A2-□U	FPW425A2-□	CH65CFAUL2
FPW540A2-□J	FPW540A2-□	CH110CFAUL2
FPW540A2-□U	FPW540A2-□	CH90CFAUL2
FPW560A2-□J	FPW560A2-□	CH180CFAUL2
FPW560A2-□U	FPW560A2-□	CH120CFAUL2
FPW690A2-□J	FPW690A2-□	CH250CFAUL2
FPW690A2-□U	FPW690A2-□	CH180CFAUL2

● 200 V/220 V/230 V type

Model	Motor model	Capacitor model
FPW425C2-□J	FPW425C2-□	CH20BFAUL
FPW425C2-□E	FPW425C2-□	CH15BFAUL
FPW540C2-□J	FPW540C2-□	CH30BFAUL
FPW540C2-□E	FPW540C2-□	CH23BFAUL
FPW560C2-□J	FPW560C2-□	CH40BFAUL
FPW560C2-□E	FPW560C2-□	CH30BFAUL
FPW690C2-□J	FPW690C2-□	CH60BFAUL
FPW690C2-□E	FPW690C2-□	CH45BFAUL
FPW425S2-□	FPW425S2-□	-
FPW540S2-□	FPW540S2-□	-
FPW560S2-□	FPW560S2-□	-
FPW690S2-□	FPW690S2-□	-

Installation

■ Location for installation

Install the motor in a well-ventilated location that provides easy access for inspection. The location must also satisfy the following conditions:

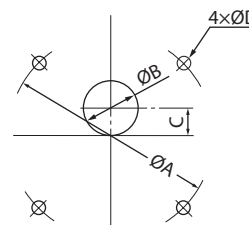
- Indoors
- Operating ambient temperature
 - 10 to +40 °C (+14 to +104 °F) (non-freezing)
 - 10 to +50 °C (+14 to +122 °F) for 100 V/200 V
- Area that is free from an explosive atmosphere or toxic gas (such as sulfuric gas) or liquid
- Area not exposed to direct sun
- Area free of excessive salt
- Area not subject to continuous vibration or excessive shocks
- Area free of excessive electromagnetic noise (from welders, power machinery, etc.)
- Area free of radioactive materials, magnetic fields or vacuum
- 1000 m or less above sea level

■ How to install the motor

Drill holes in the mounting plate and fasten the motor to the mounting plate with screws, nuts, and washers. Be sure that no gaps are left between the gearhead pilot section of the mounting plate.

The maximum plate thickness applicable when the supplied screws are used is 10 mm (0.39 in.).

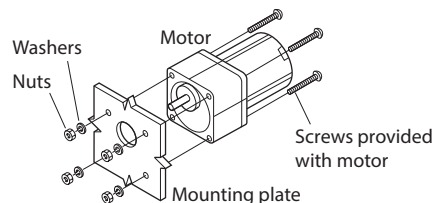
Installation holes



Model	Installation hole dimensions [mm (in.)]				Size of key [mm (in.)]
	ØA	ØB	C	4xØD	
FPW425	94 (3.70)	34 (1.34)	15 (0.59)	5.5 (0.22)	□4x25 (□0.1575x0.984)
FPW540	104 (4.09)	36 (1.42)	18 (0.71)	6.5 (0.26)	□4x25 (□0.1575x0.984)
FPW560	104 (4.09)	34 (1.34)	18 (0.71)	6.5 (0.26)	□5x25 (□0.1969x0.984)
FPW690	120 (4.72)	42 (1.65)	20 (0.79)	8.5 (0.34)	□6x25 (□0.2362x0.984)

Note

ØB indicates the external dimension of the gearhead boss. Provide a hole with a sufficient allowance.



Mounting screws

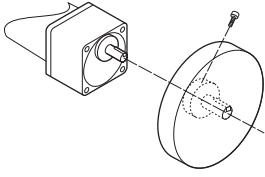
Model	Size of mounting screws		Tightening torque [N·m (lb·in.)]
	Thread size	Length [mm (in.)]	
FPW425	M5 P0.8	80 (3.15)	3.8 (33)
FPW540	M6 P1.0	90 (3.54)	6.4 (56)
FPW560	M6 P1.0	90 (3.54)	6.4 (56)
FPW690	M8 P1.25	100 (3.94)	15.5 (137)

Note

- Do not disassemble the gearhead from the motor.
- Be sure to use the supplied screws and tighten within the specified torque in order to ensure proper water proof fit.

■ Attaching Load

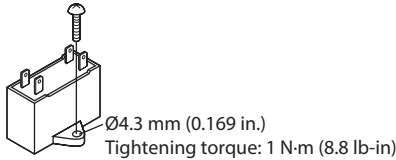
To shaft of the gearhead has been machined to an outer diameter tolerance of h7 and is provided with a key slot for connecting the transmission parts. When connecting the transmission parts, ensure that the shaft and parts have a clearance fit, and always fix the parallel key to the output shaft with a screw to prevent the parts from rattling or spinning.



Note Do not use excessive force, or hammer the transmission parts onto the gearmotor shaft as damage may occur.

■ Mounting the capacitor (only for single-phase motors)

Before mounting the provided capacitor, check that the capacitor's capacitance matches that stated on the motor's name plate. Mount the capacitor securely by using M4 screws (not provided).



Note Mount capacitor at least 10 cm (3.94 in.) away from the motor. If it is located closer, the life of the capacitor will be shortened.

Connection and operation

Insulate all the wire connections, such as the connection between the motor and the capacitor connection. Ground the motor using a protective grounding wire.

Note

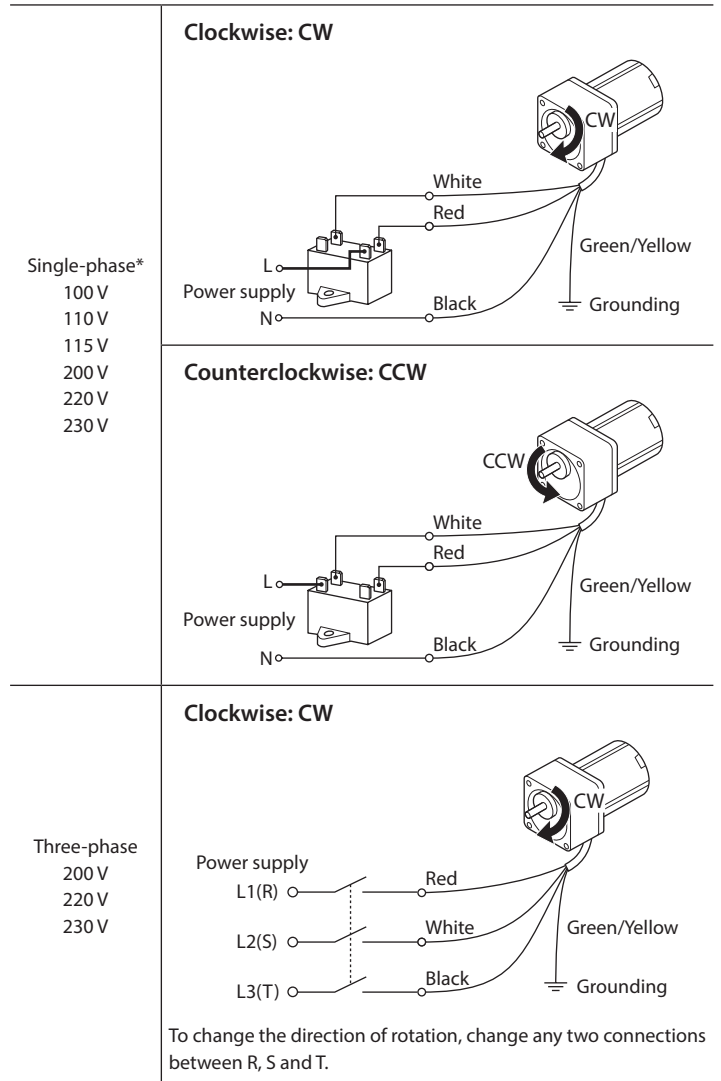
- When removing the sheath of the cable, be careful not to damage the inside lead wire.
- Make sure that the motor case temperature does not exceed 90 °C (194 °F) during operation of the motor. Operation exceeding case temperature 90 °C (194 °F) may significantly deteriorate the coils and ball bearings of the motor and shorten the motor's life span. Motor case temperature can be measured by fixing a thermometer on the motor surface. It can also be measured using thermo tape or a thermocouple. Thermal class: 130 (B)

■ Rotation direction of the gearhead output shaft

The direction of rotation is as viewed from the side of the motor's output shaft. The motor rotates in a clockwise (CW) and counterclockwise (CCW) direction. The connection method will vary depending on the gear ratio of the gearhead. Models for the gear ratio rotate as shown in the connection diagram. Models for the gear ratio rotate in the opposite direction from the connection diagram.

Model	Gear ratio									
FPW425	3	3.6	5	6	7.5	9	12.5	15	18	25
FPW540	30	36	50	60	75	90	100	120	150	180
FPW560	3	3.6	5	6	7.5	9	12.5	15	18	25
	30	36	50	60	75	90	100	120	150	180
FPW590	3	3.6	5	6	7.5	9	12.5	15	18	25
	30	36	50	60	75	90	100	120	150	180

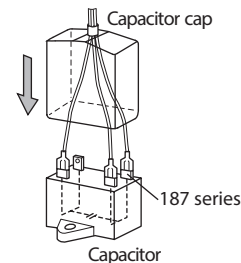
■ Wiring Diagram



* To change rotation direction of the single-phase motor, wait until the motor completely stops. Otherwise its direction may not change or may take much time to change.

■ Capacitor connection (only for single-phase motors)

For easy to install terminals use 187 series FASTON terminals (TE Connectivity). Use the supplied capacitor cap to insulate the capacitor terminal connection.



Note

- For lead wire connection, use one lead wire for each individual terminal.
- Single-phase motors use a capacitor and keep it connected even after rotation of the motor has started.

Time rating

This motor can be operated continuously (continuous rating).

Locked rotor burnout protection

This motor is equipped with the feature listed below to prevent the motor from burning out as a result of abnormal heating which may be caused by misapplication.

■ Thermal protection

"TP" is stamped on the motor nameplate. The motor has an "auto reset" type thermal protector built into its motor coil. When the motor reaches a predetermined temperature, the internal thermal protector is activated and the motor is stopped.

Always turn the power off before performing inspections.

Thermal protector activation range:

Power is turned off at 130 ± 5 °C (266 ± 9 °F)

Power is turned back on at 85 ± 20 °C (185 ± 36 °F)

Troubleshooting

When the motor cannot be operated correctly, refer to the contents provided in this section and take appropriate action. If the problem persists, contact your nearest office.

Phenomena	Check items
The motor does not rotate.	<ul style="list-style-type: none">• Check the power supply voltage.• Connect the power supply and the motor correctly.• With a single-phase motor, connect the supplied capacitor correctly.• If terminal blocks or crimp terminals are used, check them for poor connection.• Keep the load at or below the allowable value.
Motor sometimes rotates and stops.	<ul style="list-style-type: none">• Connect the power supply and the motor correctly.• With a single-phase motor, connect the supplied capacitor correctly.• If terminal blocks or crimp terminals are used, check them for poor connection.
The motor rotates in the direction opposite to the specified direction.	<ul style="list-style-type: none">• Connect correctly by referring to "Wiring diagram."• With a single-phase motor, connect the supplied capacitor correctly.• The rotating direction of the motor output shaft may be different from that of the gearhead output shaft depending on the gear ratio of the gearhead. Connect correctly by referring to "Wiring diagram."• The rotating direction is indicated as viewed from the motor output shaft. Check the reference direction.
Motor temperature abnormally high [Motor case temperature exceeds 90 °C (194 °F)]	<ul style="list-style-type: none">• Check the power supply voltage.• With a single-phase motor, connect the supplied capacitor correctly.• Review the ventilation condition.

Product warranty

Check on the Oriental Motor Website for the product warranty.

Regulations and standards

Check on the Oriental Motor Website for details about standards.

■ UL Standards, CSA Standards

This product is recognized by UL under the UL and CSA Standards.
Thermal Class: 130 (B)

■ CCC System

This product is affixed the CCC Mark under the China Compulsory Certification System.

It is also certified by CQC.

■ CE Marking / UKCA Marking

This product is affixed with the marks under the following directives/regulations.

● EU Low Voltage Directive/ UK Electrical Equipment (Safety) Regulation

● Installation conditions

Overvoltage category II, Pollution degree 3, Class I equipment

When the machinery to which the motor is mounted requires overvoltage category III specifications, connect to power supply via an isolation

■ RoHS Directive/UK RoHS Regulation

This products do not contain the substances exceeding the restriction values.

- Unauthorized reproduction or copying of all or part of this manual is prohibited.
- Oriental Motor shall not be liable whatsoever for any problems relating to industrial property rights arising from use of any information, circuit, equipment or device provided or referenced in this manual.
- Characteristics, specifications and dimensions are subject to change without notice.
- While we make every effort to offer accurate information in the manual, we welcome your input. Should you find unclear descriptions, errors or omissions, please contact the nearest office.
- ***Orientalmotor*** is a registered trademark or trademark of Oriental Motor Co., Ltd., in Japan and other countries.

© Copyright ORIENTAL MOTOR CO., LTD. 2007

Published in December 2022

- Please contact your nearest Oriental Motor office for further information.

ORIENTAL MOTOR U.S.A. CORP.
 Technical Support Tel:800-468-3982
 8:30am EST to 5:00pm PST (M-F)
www.orientalmotor.com

ORIENTAL MOTOR (EUROPA) GmbH
 Schiessstraße 44, 40549 Düsseldorf, Germany
 Technical Support Tel:00 800/22 55 66 22
www.orientalmotor.de

ORIENTAL MOTOR (UK) LTD.
 Unit 5 Faraday Office Park, Rankine Road,
 Basingstoke, Hampshire RG24 8QB UK
 Tel:+44-1256347090
www.oriental-motor.co.uk

ORIENTAL MOTOR (FRANCE) SARL
 Tel:+33-1 47 86 97 50
www.orientalmotor.fr

ORIENTAL MOTOR ITALIA s.r.l.
 Tel:+39-02-93906347
www.orientalmotor.it

ORIENTAL MOTOR CO., LTD.
 4-8-1Higashiueno,Taito-ku,Tokyo 110-8536
 Japan
 Tel:+81-3-6744-0361
www.orientalmotor.co.jp

ORIENTAL MOTOR ASIA PACIFIC PTE. LTD.
 Singapore
 Tel:1800-842-0280
www.orientalmotor.com.sg

ORIENTAL MOTOR (MALAYSIA) SDN. BHD.
 Tel:1800-806-161
www.orientalmotor.com.my

ORIENTAL MOTOR (THAILAND) CO., LTD.
 Tel:1800-888-881
www.orientalmotor.co.th

ORIENTAL MOTOR (INDIA) PVT. LTD.
 Tel:1800-120-1995 (For English)
 1800-121-4149 (For Hindi)
www.orientalmotor.co.in

TAIWAN ORIENTAL MOTOR CO., LTD.
 Tel:0800-060708
www.orientalmotor.com.tw

SHANGHAI ORIENTAL MOTOR CO., LTD.
 Tel:400-820-6516
www.orientalmotor.com.cn

INA ORIENTAL MOTOR CO., LTD.
 Korea
 Tel:080-777-2042
www.inaom.co.kr